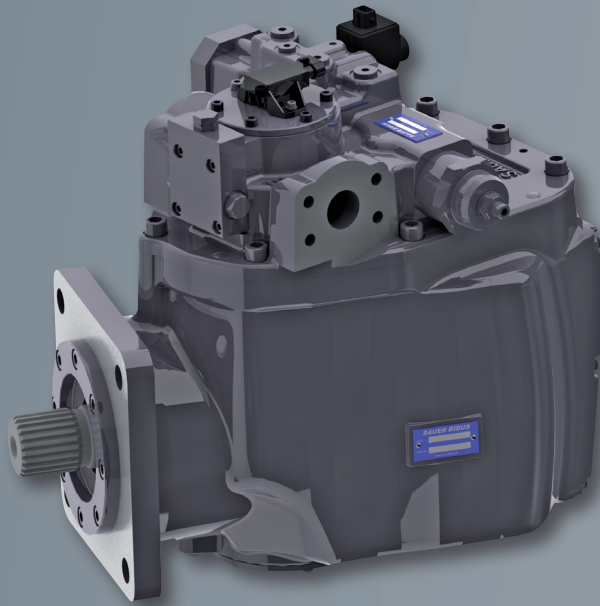


**MODUL
DRIVE**



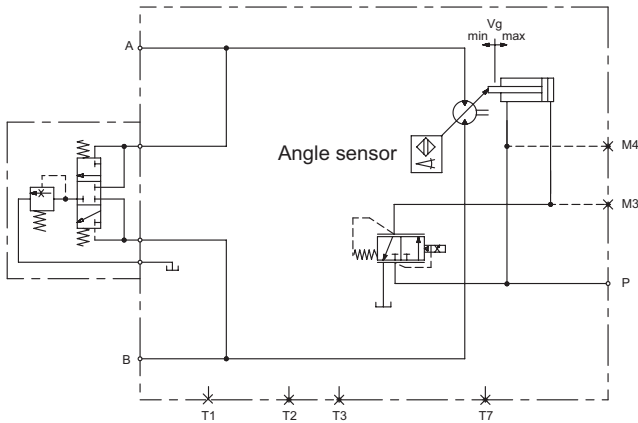
Advantages at a glance:

- Variable bent axis motor
- Hydrostatic motor
- Area of application: Agricultural and building machinery in open and closed circuit
- Continuously adjustable over the whole range
- High pressure and low pressure control
- Optimised for drive control from SAUER BIBUS
- Modular structure for mounting on SAUER BIBUS gearbox
- Simple system integration

Special features:

- 233 ccm / r displacement / 370 ccm / r displacement
- Swivel angle 45°; therefore high hydraulic transformation range
- Integrated flush valve (HP) or flange-on flush valve (LP)
- Electro-proportional control, hydraulic-proportional control, electro-proportional regulation with low pressure adjustment
- Redundant speed sensor with integrated temperature sensor optional
- High speed pulse rate by sensor on rotation group
- Reduced control oil losses
- Fewer components
- Compact installation dimensions
- Large pressure ports
- Optimised high-speed rotation group

Circuit diagram:



Connections:

A, B SAE 1 1/4", Code 62 233 ccm T1, T2 M26x1,5
 SAE 1 1/2", Code 62 370 ccm T3, T7 M14x1,5
 P M14x1,5
 M3, Ma M14x1,5

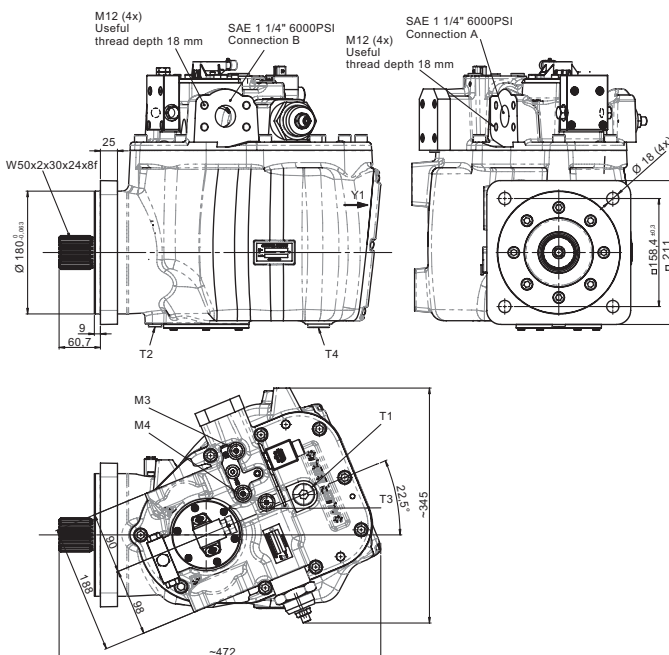
Technical data:

		233 ccm/r	370 ccm/r
→ Rated speed (on kit)	at 45°	1,600 rpm	1,300 rpm
	at 7°	4,100 rpm	3,200 rpm
	at 0°	4,300 rpm	3,400 rpm
→ Max. speed (briefly on kit)	at 45°	1,900 rpm	1,500 rpm
	at 7°	4,300 rpm	3,500 rpm
	at 0°	4,500 rpm	3,600 rpm
→ Max. working pressure		Δp 450 bar	
→ Max. pressure briefly		Δp 510 bar	
→ Control pressure	HP	Δp 450 bar	
	LP	Δp 25+2 bar	
→ Housing pressure	rated	3 bar	
	briefly	5 bar	
→ Weight		approx. 125 kg	approx. 240 kg

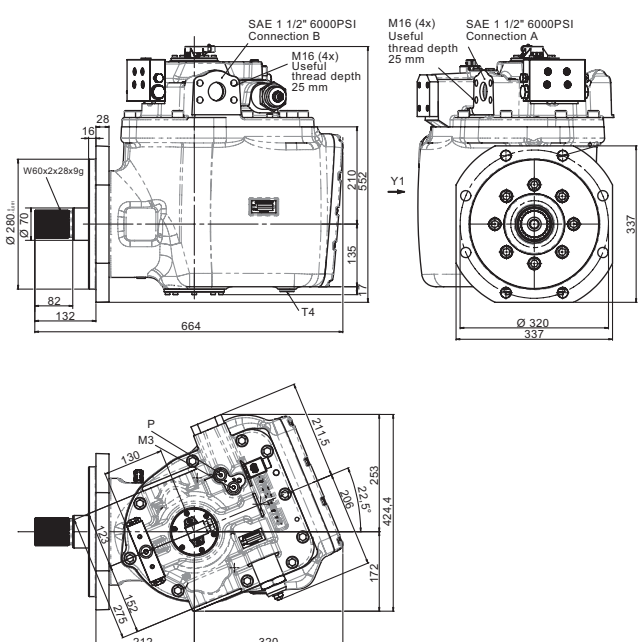
→ Different requirements on request

Dimensions:

233 ccm



370 ccm



→ Installation drawing on request